

Bellatrix Linear Lighting Fixture 42W



General Application Areas



Factories



Sports
Halls



Airports



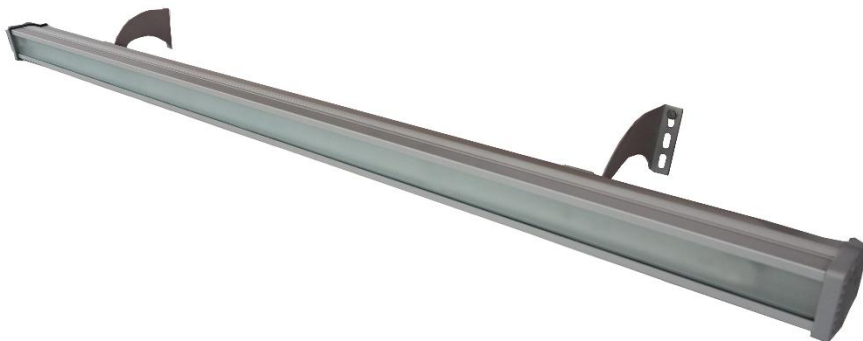
Warehouse

General Information

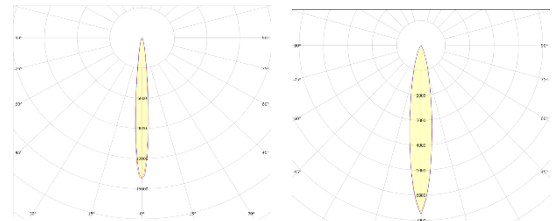
Named after the Bellatrix star, which has been used as a brightness standard for many years, the Bellatrix industrial lighting fixture is designed to replace traditional products with fluorescent light sources in order to provide uninterrupted service in harsh industrial conditions with high temperature, humidity, water and temperature differences.

It is used in indoor environments such as industrial facilities, industrial kitchens, car-carpet washing workshops, baths, laundries, and outdoor areas such as parking lots and gardens.

High temperature resistant thanks to its aluminum extrusion body, Bellatrix luminaire; durable, slim, stylish design is quick and easy to install. As a direct alternative to traditional fluorescent luminaires, it provides an average of 50% energy saving with its longer life and durable structure.

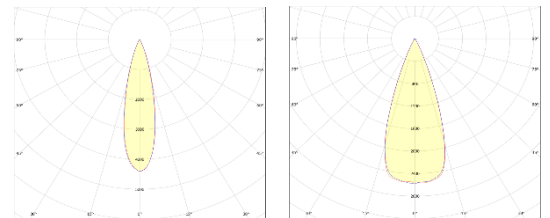


Optical Beam Angles



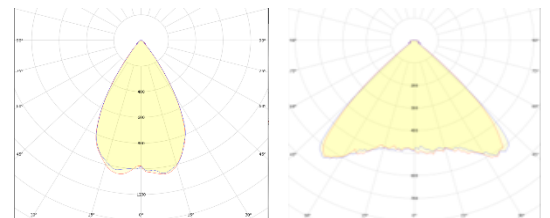
8°

17°



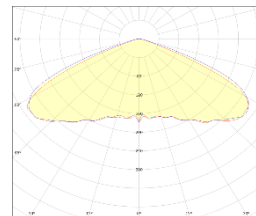
25°

45°



60°

90°



110°

Bellatrix Linear Lighting Fixture

42W

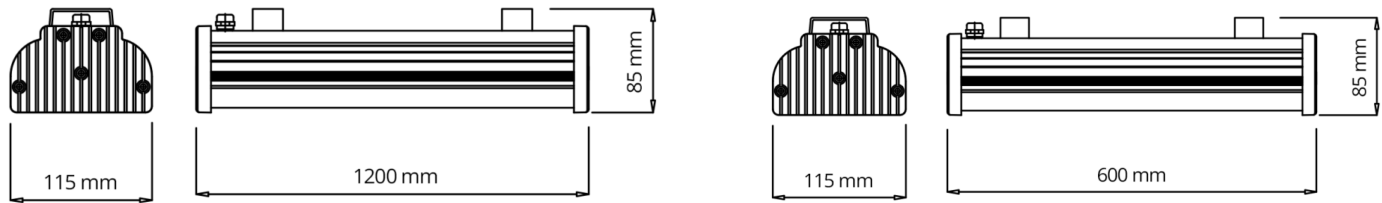
Technical Specifications

Body	:Aluminum Extrusion
IP Protection Class	:IP66
Luminous Flux	:5544 lm
Light Source	:LED
Test Standards	:TS EN 60598TS, EN 60529, TS EN 62031TS, EN 62262, TS IEC TR 62471TS, EN 62722-2-1

Optical and Electrical Properties

Power	42W	Angle of Light	8°/17°/25°/45°/60°/90°/110°
CE Marking	Yes	Power Factor	>0,9
Optics	PMMA / PC	Max Voltage Withstand	2kV
Effectiveness Factor	132 lm/W	Color Temperature	3000K/4000K/5000K/6500K
Input Voltage	200-240 V AC 50/60 HZ	CRI	>80
Total Harmonic Distortion	<%15	Input Voltage	200-240 V AC 50/60 HZ
Dimensions	1250x56x66 mm	Weight	2460 gr

Technical Drawing and Connection Diagram



Product Variations

Product Code	Power	Input Voltage	CCT	Efficiency Factor(lm/W)	Luminous Flux	Light Angle	Dimensions	Weight (gr)	Mounting Type
BLX-033CT-01101-865-9006	33W	200-240 V AC 50/60 Hz	6500K	132	4356lm	110°	1250X56X66mm	2460	Surface Mounted / Cable Tray
BLX-042CT-01101-865-9006	42W	200-240 V AC 50/60 Hz	6500K	132	5544lm	110°	1250X56X66mm	2460	Surface Mounted / Cable Tray
BLX-050CT-01101-865-9006	50W	200-240 V AC 50/60 Hz	6500K	125	6250lm	110°	1250X56X66mm	2460	Surface Mounted / Cable Tray
BLX-059CT-01101-865-9006	59W	200-240 V AC 50/60 Hz	6500K	125	7375lm	110°	1250X56X66mm	2460	Surface Mounted / Cable Tray
BLX-033WL-01101-865-9006	33W	200-240 V AC 50/60 Hz	6500K	132	4356lm	65°	1250X56X66mm	2460	Wall (Angled)
BLX-042WL-01101-865-9006	42W	200-240 V AC 50/60 Hz	6500K	132	5544lm	65°	1250X56X66mm	2460	Wall (Angled)
BLX-050WL-01101-865-9006	50W	200-240 V AC 50/60 Hz	6500K	125	6250lm	65°	1250X56X66mm	2460	Wall (Angled)
BLX-059WL-01101-865-9006	59W	200-240 V AC 50/60 Hz	6500K	125	7375lm	65°	1250X56X66mm	2460	Wall (Angled)
BLX-033CT-01101-865-00CE	33W	200-240 V AC 50/60 Hz	6500K	132	4356lm	110°	1250X56X66mm	2460	Surface Mounted / Cable Tray
BLX-042CT-01101-865-00CE	42W	200-240 V AC 50/60 Hz	6500K	132	5544lm	110°	1250X56X66mm	2460	Surface Mounted / Cable Tray
BLX-050CT-01101-865-00CE	50W	200-240 V AC 50/60 Hz	6500K	125	6250lm	110°	1250X56X66mm	2460	Surface Mounted / Cable Tray
BLX-059CT-01101-865-00CE	59W	200-240 V AC 50/60 Hz	6500K	125	7375lm	110°	1250X56X66mm	2460	Surface Mounted / Cable Tray
BLX-033WL-01101-865-00CE	33W	200-240 V AC 50/60 Hz	6500K	132	4356lm	65°	1250X56X66mm	2460	Wall (Angled)
BLX-042WL-01101-865-00CE	42W	200-240 V AC 50/60 Hz	6500K	132	5544lm	65°	1250X56X66mm	2460	Wall (Angled)
BLX-050WL-01101-865-00CE	50W	200-240 V AC 50/60 Hz	6500K	125	6250lm	65°	1250X56X66mm	2460	Wall (Angled)
BLX-059WL-01101-865-00CE	59W	200-240 V AC 50/60 Hz	6500K	125	7375lm	65°	1250X56X66mm	2460	Wall (Angled)