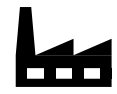


# LYRA Linear High Bay Luminaire 133W



## General Application Areas



Factories



Sports Halls



Airports



Office

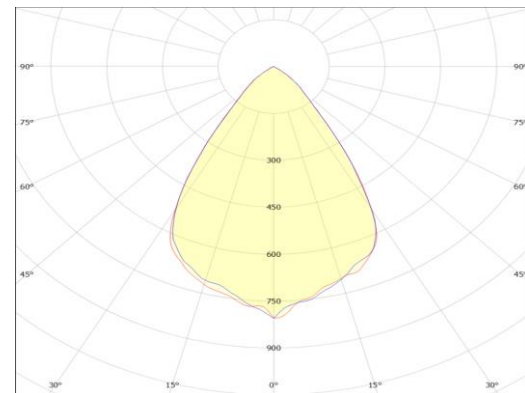
## General Information

Lyra Linear High Bay LED Luminaire is designed to replace traditional products with fluorescent light sources, especially in industrial plants, warehouses and sports facilities with ceiling heights from 7m to 12 meters. Lyra is one of the modern constellations in the sky. We named our Linear High Bay Luminaire "Lyra" inspired by modern lines.

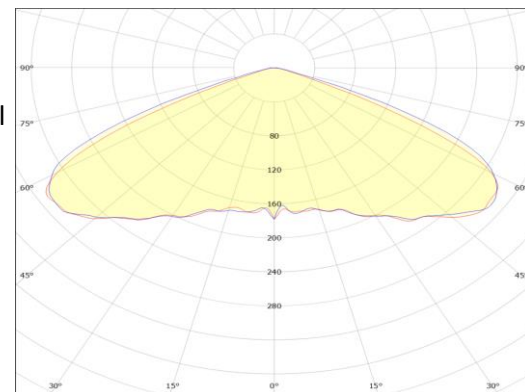
With Lyra series luminaires, you can have 365 days of uninterrupted and quality light in your facilities, maintenance-free and easy to install mechanical structure. Lyra series luminaires use well-selected components to ensure long life. With a high degree of mechanical protection (IK08), water and dust protection (IP66) and proven chemical resistance, it can perfectly withstand the harsh conditions of industries. It is a very robust, compact and reliable luminaire with excellent light quality.

It has 65° and 110° light distribution options to meet the lighting needs of factories. With Lyra series luminaires, you can replace your existing luminaires to fully meet the criteria of efficiency, energy saving, improved light management. At the same time, you can integrate it into your Industry 4.0 works with 1-10V, DALI and KNX automation control possibilities.

## Optical Beam Angles



65°



110°

# LYRA Linear High Bay Luminaire 133W

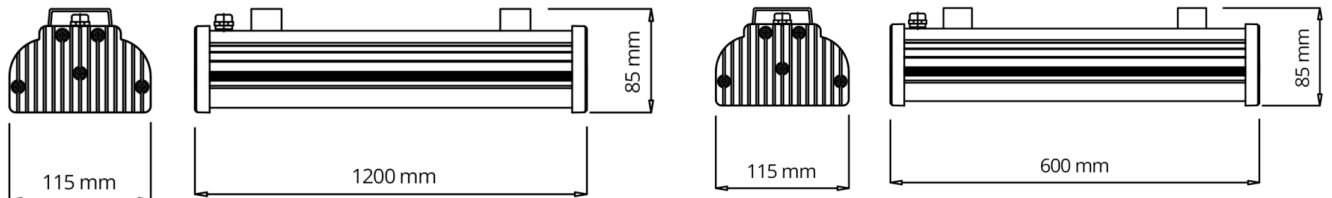
## Technical Specifications

|                            |  |
|----------------------------|--|
| <b>Body</b>                | :Aluminum Extrusion  |
| <b>IP Protection Class</b> | :IP 65-IP 66 Optional  |
| <b>Luminous Flux</b>       | :15960 lm  |
| <b>Light Source</b>        | :LED   |
| <b>Test Standards</b>      | :TS EN 60598TS, EN 60598-2-1, EN 60529, TS EN 62031TS, EN 62262, TS IEC TR 62471TS, EN 62722-2-1 |

## Optical and Electrical Properties

|                                  |                       |                              |                         |
|----------------------------------|-----------------------|------------------------------|-------------------------|
| <b>100</b>                       | 133W                  | <b>Light Angle</b>           | 65°/110°                |
| <b>CE Marking</b>                | Yes                   | <b>Power Factor</b>          | >0,9                    |
| <b>Optic</b>                     | PMMA / PC             | <b>Max Voltage Withstand</b> | 2kV                     |
| <b>Effectiveness Factor</b>      | 120 lm/W              | <b>Color Temperature</b>     | 3000K/4000K/5000K/6500K |
| <b>Input Voltage</b>             | 200-240 V AC 50/60 HZ | <b>CRI</b>                   | >80                     |
| <b>Total Harmonic Distortion</b> | <%15                  | <b>Input Voltage</b>         | 200-240 V AC 50/60 HZ   |
| <b>Dimensions</b>                | 1200x115x112 mm       | <b>Weight</b>                | 4 kg                    |

## Technical Drawing (Side View) and Connection Diagram



## Product Variations

| Product Code             | Power | Input Voltage         | CCT    | Efficiency Factor(lm/W) | Luminous Flux | Light Angle | Dimensions      | Weight (gr) | Body Color | Mounting Type                |
|--------------------------|-------|-----------------------|--------|-------------------------|---------------|-------------|-----------------|-------------|------------|------------------------------|
| LYR-72CT-01101-865-00CE  | 72    | 200-240 V AC 50/60 Hz | 6500 K | 126                     | 9072          | 110°        | 1200x115x112 mm | 4000        | Anodizing  | Surface Mounted / Cable Tray |
| LYR-93CT-01101-865-00CE  | 93    | 200-240 V AC 50/60 Hz | 6500 K | 126                     | 11718         | 110°        | 1200x115x112 mm | 4000        | Anodizing  | Surface Mounted / Cable Tray |
| LYR-113CT-01101-865-00CE | 113   | 200-240 V AC 50/60 Hz | 6500 K | 120                     | 13560         | 110°        | 1200x115x112 mm | 4000        | Anodizing  | Surface Mounted / Cable Tray |
| LYR-133CT-01101-865-00CE | 133   | 200-240 V AC 50/60 Hz | 6500 K | 120                     | 15960         | 110°        | 1200x115x112 mm | 4000        | Anodizing  | Surface Mounted / Cable Tray |
| LYR-72CT-00651-865-00CE  | 72    | 200-240 V AC 50/60 Hz | 6500 K | 140                     | 10080         | 65°         | 1200x115x112 mm | 4000        | Anodizing  | Surface Mounted / Cable Tray |
| LYR-93CT-00651-865-00CE  | 93    | 200-240 V AC 50/60 Hz | 6500 K | 140                     | 13020         | 65°         | 1200x115x112 mm | 4000        | Anodizing  | Surface Mounted / Cable Tray |
| LYR-113CT-00651-865-00CE | 113   | 200-240 V AC 50/60 Hz | 6500 K | 132                     | 14916         | 65°         | 1200x115x112 mm | 4000        | Anodizing  | Surface Mounted / Cable Tray |
| LYR-133CT-00651-865-00CE | 133   | 200-240 V AC 50/60 Hz | 6500 K | 132                     | 17556         | 65°         | 1200x115x112 mm | 4000        | Anodizing  | Surface Mounted / Cable Tray |
| LYR-72CT-01101-865-7035  | 72    | 200-240 V AC 50/60 Hz | 6500 K | 126                     | 9072          | 110°        | 1200x115x112 mm | 4000        | RAL 9006   | Surface Mounted / Cable Tray |
| LYR-93CT-01101-865-7035  | 93    | 200-240 V AC 50/60 Hz | 6500 K | 126                     | 11718         | 110°        | 1200x115x112 mm | 4000        | RAL 9006   | Surface Mounted / Cable Tray |
| LYR-113CT-01101-865-7035 | 113   | 200-240 V AC 50/60 Hz | 6500 K | 120                     | 13560         | 110°        | 1200x115x112 mm | 4000        | RAL 9006   | Surface Mounted / Cable Tray |
| LYR-133CT-01101-865-7035 | 133   | 200-240 V AC 50/60 Hz | 6500 K | 120                     | 15960         | 110°        | 1200x115x112 mm | 4000        | RAL 9006   | Surface Mounted / Cable Tray |
| LYR-72CT-00651-865-7035  | 72    | 200-240 V AC 50/60 Hz | 6500 K | 140                     | 10080         | 65°         | 1200x115x112 mm | 4000        | RAL 9006   | Surface Mounted / Cable Tray |
| LYR-93CT-00651-865-7035  | 93    | 200-240 V AC 50/60 Hz | 6500 K | 140                     | 13020         | 65°         | 1200x115x112 mm | 4000        | RAL 9006   | Surface Mounted / Cable Tray |
| LYR-113CT-00651-865-7035 | 113   | 200-240 V AC 50/60 Hz | 6500 K | 132                     | 14916         | 65°         | 1200x115x112 mm | 4000        | RAL 9006   | Surface Mounted / Cable Tray |
| LYR-133CT-00651-865-7035 | 133   | 200-240 V AC 50/60 Hz | 6500 K | 132                     | 17556         | 65°         | 1200x115x112 mm | 4000        | RAL 9006   | Surface Mounted / Cable Tray |