

BETELGEUSE Red LED Floodlight 135 W ~ 140 W

odak® R&D CENTER
smart city technologies



General Application Areas

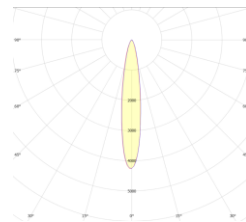


Imaging Systems

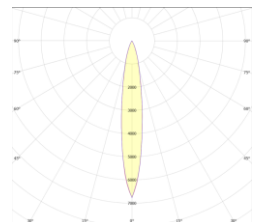


ANPR

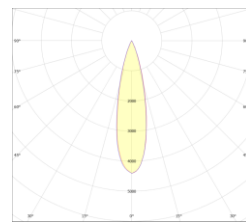
Optical Beam Angles



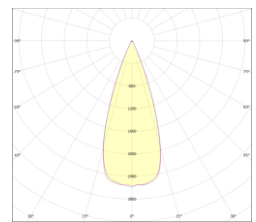
8°



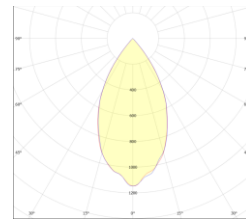
17°



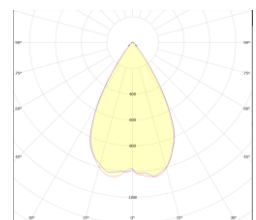
25°



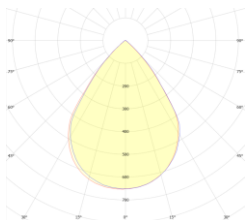
40°



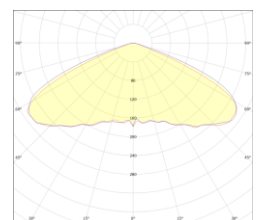
45°



60°



90°



110°

General Information

Betelgeuse LED Floodlight is an LED-based lighting device used to support red infringement systems. Its energy-efficient red light has an optimized wavelength for night vision. The luminaire body is designed to work in outdoor conditions. It has an 8° light angle for red violation, license plate reading and other highway detection systems. It has 17°, 25°, 40°, 45°, 60°, 90° and 110° options for different applications.

BETELGEUSE Red LED Floodlight 135 W ~ 140 W

Technical Specifications

Body	: Aluminum Injection
Color Options	: Black RAL 9005, Grey RAL 7016
IP Protection Class	: IP 66
Front Cover	: Tempered Glass
Light source	: LED
Lens	: PMMA
Test Standards	: TS EN 60598-1, TS EN 60598-2-5, TS EN 62031, TS EN 62262, TS IEC TR 62471, TS EN 62722-2-1

Optical and Electrical Properties

Power	135 W ~ 140 W	Total Harmonic Distortion	<%20
Wavelength	620-630 nm	Power Factor	>0,95
Infrared Emission	20 W	Warranty Period	3 Years
Light Angle	8°, 17°, 25°, 40°, 45°, °60°, 90°, 110°	Weight	7,9 kg
Input Voltage	200-240 V AC 50/60 Hz	Dimensions	330x330x72 mm
Throttling Options:	1-10V, TRIAC, DALI		

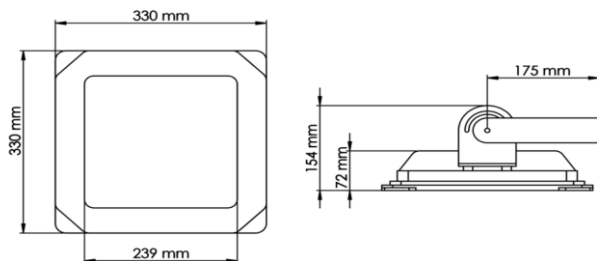
Other Features

Operating Temperature	-25°/+55°C	CE Marking	Yes
Impact Resistance Class	IK 08	RoHS Compliance:	Yes
Lifetime	≥30,000 Hours		

Properties

- Ideal for Traffic Application.
- Extra long life with very low maintenance.
- IP66 Enclosure for Outdoor Mounting.
- Compact with integrated LED Light Source.
- The pulse range can be adjusted from 1.6K~30KHz.
- Standalone or External trigger
- Synchronized support with camcorder (NTSC&PAL)
- Super long range up to 300m.

Technical Drawing (Side View) and Wiring Diagram



Product Variations

Product Code	Power	Input Voltage	Lumens	Wavelength	Dimensions	Weight
BTL-135SM-00082-850-7016	135 W ~ 140 W	200-240 V AC 50/60 Hz	7750 lm	620-630 nm	330x330x72 mm	7,5 kg