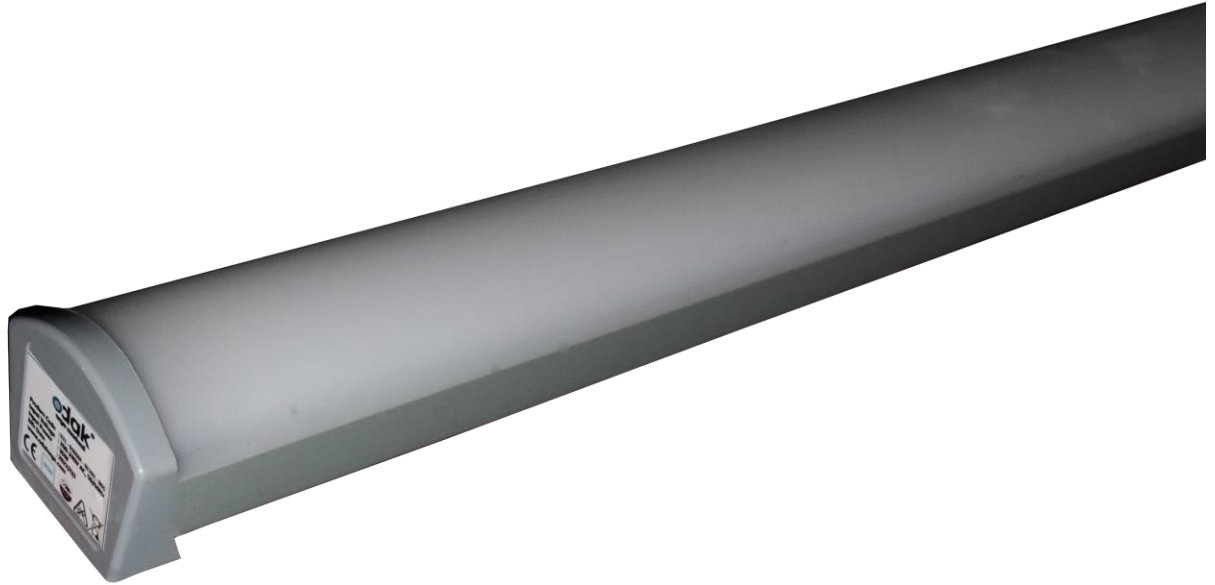


# HYDRA Waterproof Luminaire 18 W



## General Application Areas



Closed Parking lots



Industrial Kitchen



Auto Washings

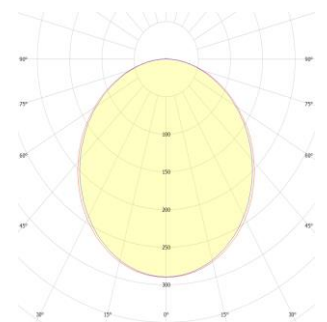


Indoor Sports Halls



Schools

## Optical Beam Angles



110°

## General Information

Ethaneaj Luminaires are designed to safeguard lighting fixtures from water and moisture in a variety of indoor settings, including industrial kitchens, bathrooms, car-carpet washing workshops, baths, laundries, and outdoor areas such as parking lots and gardens where water and moisture are present. The durable, slim, and stylish design of ethanol luminaires makes them quick and easy to install. As a direct alternative to traditional fluorescent luminaires, they offer a significant reduction in energy consumption.

# HYDRA Waterproof Luminaire 18 W

## Technical Specifications

<b>Power</b>	:18 W ± %3
<b>Input Voltage</b>	:200-240 V AC 50/60 HZ
<b>Power Factor</b>	:>0,95
<b>Effectiveness Factor</b>	:120 +lm/W
<b>Luminous Flux</b>	:2160 lm
<b>Light Angle</b>	:110°
<b>Color Temperature (CCT)</b>	:3000K-4000K-5000K-6500K
<b>Color Rendering Index (CRI)</b>	:80+
<b>IP Protection Class</b>	:IP 65
<b>Dimensions</b>	:50x60x600 mm
<b>Weight</b>	:0,4 kg
<b>Test Standards</b>	:EN 60598-1, EN 60529, EN 60598-2-1, IEC TR 62778, LM 79-18
<b>Warranty Period</b>	:3 Years

## Optik ve Elektriksel Özellikler

<b>Body</b>	Polycarbonate Extrusion	<b>CE Marking</b>	Yes
<b>Color Options</b>	Gri RAL 7016	<b>RoHS Compliance</b>	Yes
<b>Light Source</b>	LED	<b>Lifetime</b>	≥60,000 Hours
<b>Impact Resistance</b>	IK 08	<b>Throttling Options</b>	1-10V, TRIAC, DALI
<b>Total Harmonic Distortion</b>	<%20	<b>Operating Temperature</b>	-25°/+55°C

## Technical Drawing (Side View) and Connection Diagram



# HYDRA Waterproof Luminaire 18 W

## Standard Product Variations

Product Code	Power	Input Voltage	CCT	Luminous Flux	Effectiveness Factor	Light Angle	Dimensions	Weight
HYD-018SM-01101-830-0000	18W	200-240 V AC 50/60 Hz	3000 K	1908 lm	106 lm/W	110°	50X60X600 mm	0,4 kg
HYD-036SM-01101-830-0000	36W	200-240 V AC 50/60 Hz	3000 K	3816 lm	106 lm/W	110°	50X60X1200 mm	0,65 kg
HYD-044SM-01101-830-0000	44W	200-240 V AC 50/60 Hz	3000 K	4488 lm	102 lm/W	110°	50X60X1200 mm	0,65 kg
HYD-065SM-01101-830-0000	65W	200-240 V AC 50/60 Hz	3000 K	6630 lm	102 lm/W	110°	50X60X1500 mm	0,85 kg
HYD-065SM-01101-840-0000	18W	200-240 V AC 50/60 Hz	4000 K	1980 lm	110 lm/W	110°	50X60X600 mm	0,4 kg
HYD-044SM-01101-840-0000	36W	200-240 V AC 50/60 Hz	4000 K	3960 lm	110 lm/W	110°	50X60X1200 mm	0,65 kg
HYD-036SM-01101-840-0000	44W	200-240 V AC 50/60 Hz	4000 K	4664 lm	106 lm/W	110°	50X60X1200 mm	0,65 kg
HYD-018SM-01101-840-0000	65W	200-240 V AC 50/60 Hz	4000 K	7540 lm	116 lm/W	110°	50X60X1500 mm	0,85 kg
HYD-065SM-01101-850-0000	18W	200-240 V AC 50/60 Hz	5000 K	2160 lm	120 lm/W	110°	50X60X600 mm	0,4 kg
HYD-044SM-01101-850-0000	36W	200-240 V AC 50/60 Hz	5000 K	4320 lm	120 lm/W	110°	50X60X1200 mm	0,65 kg
HYD-036SM-01101-850-0000	44W	200-240 V AC 50/60 Hz	5000 K	5104 lm	116 lm/W	110°	50X60X1200 mm	0,65 kg
HYD-018SM-01101-850-0000	65W	200-240 V AC 50/60 Hz	5000 K	7540 lm	116 lm/W	110°	50X60X1500 mm	0,85 kg
HYD-065SM-01101-865-0000	18W	200-240 V AC 50/60 Hz	6500 K	2160 lm	120 lm/W	110°	50X60X600 mm	0,4 kg
HYD-044SM-01101-865-0000	36W	200-240 V AC 50/60 Hz	6500 K	4320 lm	120 lm/W	110°	50X60X1200 mm	0,65 kg
HYD-036SM-01101-865-0000	44W	200-240 V AC 50/60 Hz	6500 K	5104 lm	116 lm/W	110°	50X60X1200 mm	0,65 kg
HYD-018SM-01101-865-0000	65W	200-240 V AC 50/60 Hz	6500 K	7540 lm	116 lm/W	110°	50X60X1500 mm	0,85 kg

## Product Variations with Emergency Kit

Product Code	Power	Input Voltage	CCT	Luminous Flux	Effectiveness Factor	Light Angle	Dimensions	Weight
HYD-018SM-01101-830-02E3	18W	200-240 V AC 50/60 Hz	3000 K	1908 lm	106 lm/W	110°	50X60X600 mm	0,4 kg
HYD-036SM-01101-830-02E3	36W	200-240 V AC 50/60 Hz	3000 K	3816 lm	106 lm/W	110°	50X60X1200 mm	0,65 kg
HYD-044SM-01101-830-02E3	44W	200-240 V AC 50/60 Hz	3000 K	4488 lm	102 lm/W	110°	50X60X1200 mm	0,65 kg
HYD-065SM-01101-830-02E3	65W	200-240 V AC 50/60 Hz	3000 K	6630 lm	102 lm/W	110°	50X60X1500 mm	0,85 kg
HYD-065SM-01101-840-02E3	18W	200-240 V AC 50/60 Hz	4000 K	1980 lm	110 lm/W	110°	50X60X600 mm	0,4 kg
HYD-044SM-01101-840-02E3	36W	200-240 V AC 50/60 Hz	4000 K	3960 lm	110 lm/W	110°	50X60X1200 mm	0,65 kg
HYD-036SM-01101-840-02E3	44W	200-240 V AC 50/60 Hz	4000 K	4664 lm	106 lm/W	110°	50X60X1200 mm	0,65 kg
HYD-018SM-01101-840-02E3	65W	200-240 V AC 50/60 Hz	4000 K	7540 lm	116 lm/W	110°	50X60X1500 mm	0,85 kg
HYD-065SM-01101-850-02E3	18W	200-240 V AC 50/60 Hz	5000 K	2160 lm	120 lm/W	110°	50X60X600 mm	0,4 kg
HYD-044SM-01101-850-02E3	36W	200-240 V AC 50/60 Hz	5000 K	4320 lm	120 lm/W	110°	50X60X1200 mm	0,65 kg
HYD-036SM-01101-850-02E3	44W	200-240 V AC 50/60 Hz	5000 K	5104 lm	116 lm/W	110°	50X60X1200 mm	0,65 kg
HYD-018SM-01101-850-02E3	65W	200-240 V AC 50/60 Hz	5000 K	7540 lm	116 lm/W	110°	50X60X1500 mm	0,85 kg
HYD-065SM-01101-865-02E3	18W	200-240 V AC 50/60 Hz	6500 K	2160 lm	120 lm/W	110°	50X60X600 mm	0,4 kg
HYD-044SM-01101-865-02E3	36W	200-240 V AC 50/60 Hz	6500 K	4320 lm	120 lm/W	110°	50X60X1200 mm	0,65 kg
HYD-036SM-01101-865-02E3	44W	200-240 V AC 50/60 Hz	6500 K	5104 lm	116 lm/W	110°	50X60X1200 mm	0,65 kg
HYD-018SM-01101-865-02E3	65W	200-240 V AC 50/60 Hz	6500 K	7540 lm	116 lm/W	110°	50X60X1500 mm	0,85 kg