

ROSS Infrared LED Floodlight 40W

odak[®] arge
merkezi
akıllı şehir teknolojileri



General Application Areas



Imaging Systems



ANPR

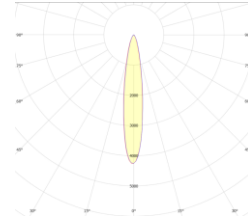
General Information

The Infrared LED Floodlight is an LED-based lighting device designed to support imaging systems.

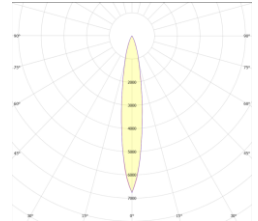
The infrared light is energy-efficient and has an optimized wavelength for night vision. The luminaire body is designed to withstand outdoor conditions.

The 10° light angle is ideal for speed detection, license plate reading, and other highway detection systems. It is also available in 8°, 17°, 25°, 40°, 45°, 60°, 90°, and 110° for a range of applications.

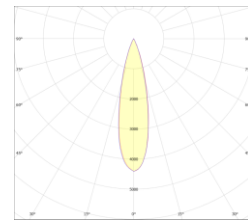
Optical Beam Angles



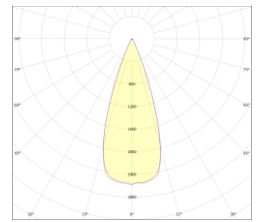
8°



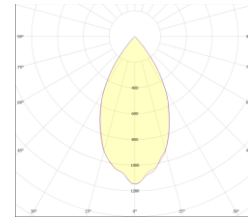
17°



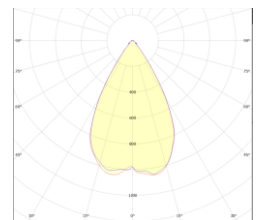
25°



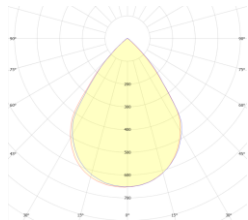
40°



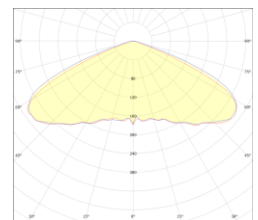
45°



60°



90°



110°

Technical Specifications

Trunk	: Aluminum Extrusion
Color Options	: Cream
IP Protection Class	: IP 66
Front Cover	: Tempered Glass
Light source	: LED
Lens	: PMMA
Test Standards	: EN 60598-1, EN 60529, LM 79-18EN 60598-2-5, IEC TR 62778

Optical and Electrical Properties

Power	40 W \pm %3	Total Harmonic Distortion	<%20
Wavelength	850 nm	Power Factor	>0,95
Infrared Emission	7,2 W	Warranty Period	3 Years
Light Angle	8°, 17°, 25°, 40°, 45°, °60°, 90°, 110°	Weight	2,7 kg
Input Voltage	200-240 V AC 50/60 Hz	Dimensions	250x150x70 mm
Throttling Options:	1-10V, TRIAC, DALI		

Other Features

Operating Temperature	-25°/+55°C	CE Marking	Yes
Impact Resistance Class	IK 08	RoHS Compliance:	Yes
Lifetime	\geq 30,000 Hours		

Properties

- Ideal for Traffic Application.
- Extra long life with very low maintenance.
- IP66 Enclosure for Outdoor Mounting.
- Compact with integrated LED Light Source.
- The pulse range can be adjusted from 1.6K~30KHz.
- Standalone or External trigger
- Synchronized support with camcorder (NTSC&PAL)
- Super long range up to 400m.

Technical Drawing (Side View) and Wiring Diagram

