

BETELGEUSE Infrared LED Projector



General Application Areas

Optical Beam Angles



Imaging Systems



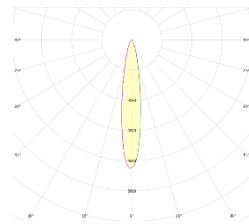
ANPR

General Information

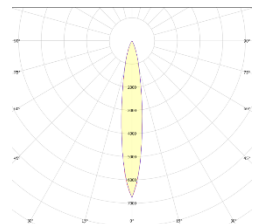
The Infrared LED Floodlight is an LED-based lighting device used to support imaging systems. Its energy-efficient infrared light has a wavelength optimized for night vision, making it ideal for use in challenging conditions.

The luminaire body is designed to withstand harsh environments and is protected by IP66 and IK08 standards.

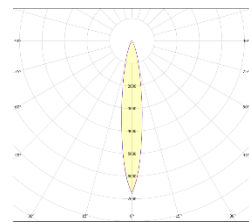
This product is available in a range of beam angles, including 8°, 17°, 20°, 25°, 30°, 45°, 60°, and 120°. It is suitable for a variety of applications, including ANPR and ALPR, and can accommodate light sources ranging from 20mt to 200mt.



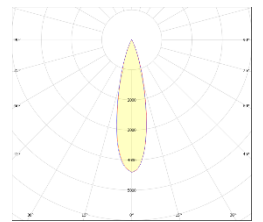
8°



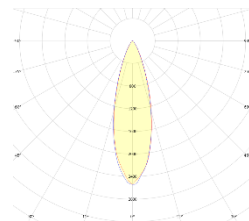
17°



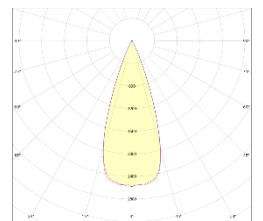
20°



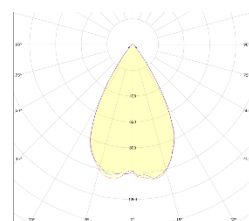
25°



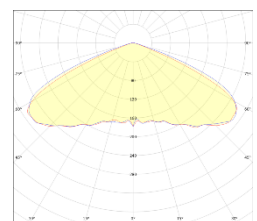
30°



45°



60°



120°

Technical Specifications

| | |
|---------------------|--|
| Body | : Aluminum Injection |
| Color Options | : Black RAL 9005, Grey RAL 7016 |
| IP Protection Class | : IP 66 |
| Front Cover | : Tempered Glass |
| Light source | : LED |
| Lens | : PMMA |
| Test Standards | : TS EN 60598-1, TS EN 60598-2-5, TS EN 62031, TS EN 62262, TS IEC TR 62471, TS EN 62722-2-1 |

Optical and Electrical Properties

| | | | |
|---------------------|---|---------------------------|---------------|
| Power | 100 W/125W / 150W | Total Harmonic Distortion | <%20 |
| Wavelength | 850 nm | Power Factor | >0,95 |
| Infrared Emission | > 13 W | Warranty Period | 3 Years |
| Light Angle | 8°, 17°, 20°, 25°, 30°, 45°, °60°, 120° | Weight | 7,1 kg |
| Input Voltage | 200-240 V AC 50/60 Hz | Dimensions | 440x430x65 mm |
| Throttling Options: | 1-10V, TRIAC, DALI | | |

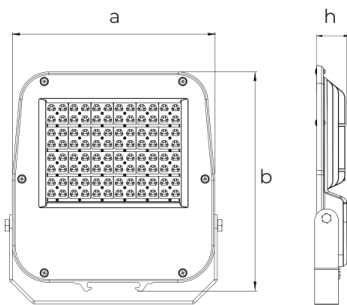
Other Features

| | | | |
|-------------------------|---------------|------------------|-----|
| Operating Temperature | -25°/+55°C | CE Marking | Yes |
| Impact Resistance Class | IK 08 | RoHS Compliance: | Yes |
| Lifetime | ≥30,000 Hours | | |

Properties

- Ideal for Traffic Application.
- Extra long life with very low maintenance.
- IP66 Enclosure for Outdoor Mounting.
- Compact with integrated LED Light Source.
- The pulse range can be adjusted from 1.6K~30KHz.
- Standalone or External trigger
- Synchronized support with camcorder (NTSC&PAL)
- Super long range up to 400m.

Technical Drawing (Side View) and Wiring Diagram



Product Variations

| Product Code | Power | Input Voltage | Infrared Emission | Wavelength | Dimensions | Weight | Carton Product Dimensions | Carton Product Weight |
|--------------------------|-------|-----------------------|-------------------|------------|---------------|--------|---------------------------|-----------------------|
| BTL-080SM-00082-850-7016 | 80 W | 200-240 V AC 50/60 Hz | 13 W | 850 nm | 440x430x65 mm | 7,5 kg | 460x540x110 mm | 8,5 kg |
| BTL-100SM-00082-850-7016 | 100 W | 200-240 V AC 50/60 Hz | 20 W | 850 nm | 440x430x65 mm | 7,5 kg | 460x540x110 mm | 8,5 kg |
| BTL-125SM-00082-850-7016 | 125 W | 200-240 V AC 50/60 Hz | 27 W | 850 nm | 440x430x65 mm | 7,5 kg | 460x540x110 mm | 8,5 kg |
| BTL-150SM-00082-850-7016 | 150 W | 200-240 V AC 50/60 Hz | 31 W | 850 nm | 440x430x65 mm | 7,5 kg | 460x540x110 mm | 8,5 kg |